	COMPANY HEALTH AND SAFETY PROGRAM	
	Document No. 8.1	Date: August 17, 2006
	Confined Space Entry Program	Revision: 0

1.0 PURPOSE

The purpose of the Confined Space Entry Program is to provide safe working conditions for entry into confined spaces through the requirements set forth in this program and included procedures. The minimum requirements needed to protect HES, contractor, and subcontractor personnel from hazards associated with entry into confined spaces are presented in this program and procedure.

2.0 SCOPE

This program applies to all HES projects that involve entry into confined spaces which are subject to the provisions of 29 CFR 1910.146.

3.0 PROGRAM MAINTENANCE

This program will be maintained by the Health & Safety Manager and approved by the Director, Environmental Services with each new revision.

4.0 DEFINITIONS

Many of the terms used in this program have been defined in 29 CFR 1910.146. The following terms are commonly used:

- *Confined space* – A space that is large enough and so configured that an employee can bodily enter and perform assigned work, and has limited or restricted means for entry or exit (for example, tanks, vessels, silos, storage bins, hoppers, vaults, and pits), and is not designed for continuous employee occupancy.
- *Entry* – The action by which a person passes through an opening into a permit-required confined space. Entry is considered to have occurred as soon as any part of the entrant's body breaks the plane of an opening into the space.
- *Entry permit* - The written or printed document that is provided by HES or contractor to allow or control entry into a permit space and that contains the information specified in the Standard.
- *Hazardous atmosphere* – An atmosphere that may expose employees to the risk of death, incapacitation, impairment of ability to self-rescue (escape unaided), injury, or acute illness from one or more of the following causes: **1.** Flammable gas, vapor, or mist in excess of 10% of its lower flammable limit (LFL); **2.** Airborne combustible dust at a concentration that meets or exceeds its LFL (concentration may be approximated as a condition in which the dust obscures vision at a distance of 5 feet or less); **3.** Atmospheric oxygen concentration below 19.5% or above 23.5%; **4.** Atmospheric concentration of any substance for which a dose or a permissible exposure limit is published in Subpart G, *Occupational Health and Environmental*

Confined Space Entry Program	
Document No.: 8.1	Revision: 0

Control, or in Subpart Z, *Toxic and Hazardous Substances*, of 29 CFR 1910 and which could result in employee exposure in excess of its dose or PEL; **5.** Any other atmospheric condition that is immediately dangerous to life and health (IDLH).

- *Immediately dangerous to life or health (IDLH)* – Any condition that poses an immediate or delayed threat to life or that would interfere with an individual’s ability to escape unaided from a permit space.
- *Permit-required confined space* – A confined space that has one or more of the following characteristics: **1.** Contains or has a potential to contain a hazardous atmosphere; **2.** Contains a material that has the potential for engulfing an entrant; **3.** Has an internal configuration such that an entrant could be trapped or asphyxiated by inwardly converging walls or by a floor, which slopes downward and tapers to a smaller cross section; or **4.** Contains any other recognized serious safety or health hazard.
- *Non-permit confined space* – A confined space that does not contain or, with respect to atmospheric hazards, have the potential to contain any hazard capable of causing death or serious physical harm.

5.0 RESPONSIBILITIES

HES will implement the necessary measures to prevent unauthorized entry. Procedures or practices will be developed and implemented to ensure safe confined space entry activities. The proper equipment will be provided to employees along with the appropriate training to use that equipment.

The *Project manager* or *site supervisor* will be responsible for the following:

- The recognition of confined spaces on the projects under their control and for communicating this information to the Health & Safety Manager during preparation of the Project Health and Safety Plan.
- Ensuring that appropriate warning signs are affixed at each point of entry into a permit-required confined space.
- Ensuring compliance with the provisions of this program.
- Ensuring that a copy of the program and associated procedures are made available to employees upon their request.
- Ensuring that contractor and subcontractor personnel are informed of the procedures involved with this program applicable to them.
- Ensuring that all employees involved have training, which is adequate for their assignment.

Confined Space Entry Program	
Document No.: 8.1	Revision: 0

The *Site employees* are responsible for the following:

- Engaging only in the activities for which they have been properly trained prior to entering any confined space, and for obtaining a proper entry permit prior to entering a permit-required confined space.
- Understanding the provisions for confined space activities set forth in this program.

The *Health and Safety Officer* is responsible for the following:

- Ensuring that confined space entry issues are considered during preparation of project health and safety plans.
- Developing and conducting appropriate training programs for all HES employees involved with confined space activities. Also responsible for documenting all training conducted under this program.
- Conducting audits and/or work site inspections for projects.
- Assisting project managers/supervisors in the implementation of this program and associated procedures.

6.0 HAZARD IDENTIFICATION

Typically, the presence of confined spaces and the need to enter permit-required confined spaces will be identified during the preparation of work plans or site-specific health and safety plans and will be communicated during site-specific safety meetings or training. When new or previously unidentified hazards arise, methods of control will be implemented to ensure continued safety through engineering controls, administrative controls, or personal protective equipment.

The owner or operator of the confined space may also provide valuable information as to the hazards, contents, and operations of the space.

Conditions and precautionary measures for entry will be dependent upon the potential hazards associated with the entry, atmospheric test results, other physical hazards, and structural conditions and constraints.

7.0 HEALTH AND SAFETY PLANS

When entry into a permit-required confined space is determined to be necessary, the health and safety plan will include information that addresses the following:

- A description of the space and its location
- A description of the work to be performed

Confined Space Entry Program	
Document No.: 8.1	Revision: 0

- The name of the entry supervisor
- Duties of the entrants, rescue team, and attendants
- A description of all known chemical and physical hazards
- Requirements for atmospheric testing and monitoring
- Acceptable entry conditions and prohibited conditions
- Requirements and equipment needed for the space
- Anticipated PPE for entry and action levels for modification
- Resources required for rescue, first-aid, and medical services
- Communications for the attendants, entrants, and rescue team

NOTE: If the space does not require an entry permit as defined by section 4.0 of this program, accident prevention measures may still need to be established through the Supervisor, the use of the Pre-Entry Checklist and the support of the Health & Safety Manager.

8.0 EMPLOYEE TRAINING

All HES personnel who will perform, supervise, or manage fieldwork will be informed of the existence of this Confined Space Entry Program. This information will also be provided as part of new employee orientation training when applicable. Employees will be kept up to date regarding any modifications made to this program and/or associated procedures and will be retrained when there is reason to suspect that there are inadequacies in employee knowledge. All training will be documented by recording the employee's name, the trainer's name, and the date of training.

Awareness training will be provided to personnel who will come into contact with areas surrounding confined spaces (e.g. Phase I personnel). The awareness training will allow a level of knowledge to become familiar with the aspects of a confined space and its potential hazards.

All entry supervisors, entry teams, and rescue teams will have been trained and hold the necessary skills to perform confined space entry. These personnel will read and understand this program and associated procedures as well as the entry permit. A Permit-Required Confined Space Decision Flow Chart is on page 13 of this program. The flow chart addresses a step-by-step process for working in permit spaces.

9.0 CONTRACTORS AND SUBCONTRACTORS

Whenever HES contractors or subcontractors enter permit-required confined spaces, they will be provided with all of pertinent information available to HES concerning the confined space and the hazards that may be encountered. Contractors and subcontractors will be required to submit to the information required by this program and will be required to complete an approved confined space entry permit.

Confined Space Entry Program	
Document No.: 8.1	Revision: 0

10.0 ATMOSPHERIC TESTING

Each confined space will be evaluated to determine the need for and extent of atmospheric protection. The data collected will be entered on the entry permit. These initial evaluations will consider the following:

- Previous known uses and chemicals contained in the confined space (past/present)
- Completeness of the information available about the confined space
- Potential for the work to create a hazardous atmosphere
- Potential for flammable gases or vapors
- Potential for oxygen deficient atmospheres
- Potential for toxic gases, vapors, or particulates

A test for oxygen is performed first because most combustible gas meters are oxygen dependent and will not provide reliable readings in an oxygen deficient atmosphere. Combustible gases are tested next because the threat of fire or explosion is both more immediate and more life threatening, in many cases, than exposure to toxic gases and vapors. If tests for toxic gases and/or vapors are necessary, they are performed last.

11.0 CALIBRATIONS AND MONITORING REQUIREMENTS

Instruments must be calibrated before each job begins and when there is a reason to believe that the instrument may not be functioning properly. Calibrations shall be documented on the entry permit or calibration form.

Testing performed prior to entry shall be made with any air moving devices “off” and, as needed, with the air moving devices “on” to provide information about actual working conditions. Once entry has been made, additional tests shall be performed to demonstrate the continued safety of the confined space occupants.

12.0 METHODS FOR ISOLATING CONFINED SPACES

A trained employee familiar with isolation practices must perform isolation of confined spaces. The techniques available for isolating confined spaces include:

- Disconnecting piping to provide an air gap in a way that ensures no liquid or vapor could enter the confined space.
- Installing a blind or pancake flange at a point as close as possible to the space to be entered.

Confined Space Entry Program	
Document No.: 8.1	Revision: 0

- Double blocking and bleeding at a point as close as possible to the space to be entered. This process involves closing two valves along each line that enters/exits the space and draining or relieving product or material from between each of the two valves.
- De-energizing electrical equipment associated with the space to prevent the unexpected startup of moving or rotating machinery, and to prevent intentional accidental contact with energized electrical conductors.
- Physically blocking any rotating equipment and control of radioactive sources contained in instrumentation supplied to the space.

13.0 METHODS FOR VENTILATING CONFINED SPACES

The most commonly used mechanical ventilators is propeller type axial flow fans driven by compressed air or electrically powered centrifugal fans connected to accordion-style duct work. Consideration shall be given to the following:

- Dilution ventilation will not usually reduce concentrations of highly toxic vapors to levels at which can be made without respiratory protection, when these are being generated from volatile liquids that still remain in the space.
- Ventilating equipment can produce ignition and; therefore, special precaution must be taken when ventilating spaces that contain flammable or explosive atmospheres. In such instances, air movers must be electrically grounded, bonded, and have explosion proof motors.
- Air movers driven by compressed air can introduce carbon monoxide into the confined space if the compressor exhaust is allowed to be drawn into the compressor's air intake.

14.0 TOOLS AND EQUIPMENT USE

The use of tools and equipment in confined spaces can sometimes create hazards that would not otherwise exist outside the space. Some important precautions to considered are as follows:

- Electrical equipment taken into confined spaces must be connected to a ground fault circuit interrupter (GFCI). The GFCI must be tested prior to use and remain outside the space.
- Only approved lighting that is intrinsically safe/explosion proof, will be used in conjunction with confined spaces that contain or could contain flammable or explosive atmospheres.

Confined Space Entry Program	
Document No.: 8.1	Revision: 0

- The use of inert gasses, hazardous substances, and other materials must be taken into consideration and precautions taken to ensure the safety of entrants.
- Pressurized gas cylinders will not be taken into confined spaces, except for self-contained breathing apparatus.
- Welding and cutting torches must be immediately taken out of confined spaces when not in use.

NOTE: Approval to use welding or cutting torches in confined spaces must be received from the Health & Safety Manager and a hot work permit must be used along with the entry permit.

15.0 PERMIT-REQUIRED CONFINED SPACE ENTRY PROCEDURE

Coordination will be made with contractor or subcontractor personnel prior to confined space activities and a permit will be obtained from an authorized HES representative. In the instance HES is a subcontractor the same permit may be used by both HES and contractor as long as approved or authorized company representatives agree to and sign and date the permit. The entry permit will be posted at the entry portal and reviewed by all involved with the entry proceedings prior to the start of the space entry. Lockout/Tagout activities will be actively and responsibly followed in coordination with contractor or subcontractor (if applicable) and HES representatives. Power sources controlling operation equipment to the space will be clearly de-energized and locked out by HES personnel prior to the entry permit being signed by the authorizing personnel. Equipment required to complete HES confined space activities will be powered by a source from a different secured circuit.

The Project Manager will be responsible for following and enforcing the system for permit entry. The Project Manager will assign designated HES workers/employees who-through training and experience-are competent to participate in confined space activities. At least one person per shift will be available to determine when an entry permit is required; issue a valid, completed permit which prescribes all tests to be performed and which specifies whether such measure as a lockout/tagout, or physical isolation are required; and to ensure that a timely efficient rescue would be possible if needed. The supervisor(s), attendant(s), and entrant(s) must print their name, time of entering the space, and time of exiting the space on the entry permit.

The following key personnel are described along with their general duties and responsibilities to be followed:

Confined Space Entry Program	
Document No.: 8.1	Revision: 0

Entry Supervisor

- The Entry Supervisor will know the hazards that may be faced during entry, such as signs or symptoms and consequences of the exposure.
- The Entry Supervisor will verify that the appropriate entries have been made on the permit, that all tests specified by the permit have been conducted and that all procedures and equipment specified by the permit are in place before endorsing the permit and allowing entry to begin.
- The Entry Supervisor terminates the entry and cancels the permit when the operation covered by the permit are completed or if a condition not acceptable arises.
- Must direct the persons within the space to exit the space whenever the attendant detects conditions that may jeopardize the safety of the entrants and whenever the attendant cannot be available to perform his/her assigned duties.
- The Entry Supervisor verifies that rescue services are available as well as the communication to the services.

Attendant

- The Attendants will know the hazards that may be faced during entry, such as signs or symptoms and consequences of the exposure.
- Emergency names and numbers will be accessible to the Attendant, as well as a means of communication to Emergency services.
- Testing and monitoring will be performed initially and during entry activities.
- The Attendant will continuously maintain an accurate count of authorized entrants in the permit space and remain outside the permit space during entry operations until relieved by another Attendant.
- The Attendant will communicate with authorized entrants as necessary and monitor activities inside and outside the space to determine if it is safe for entrants to remain and order the entrants to evacuate if a change in space conditions become a possible hazard.

Authorized Entrant

- Must be authorized on the permit and authorized by the entry supervisor.
- Testing and monitoring will be performed initially and during entry activities.

Confined Space Entry Program	
Document No.: 8.1	Revision: 0

- Required to wear a full body harness during entry activities.
- Must know the hazards that may be faced during entry, including information on signs, symptoms, consequences, and routes of overexposure to the hazards
- Must know how to use the equipment being provided to them.
- Must communicate with the attendant as necessary to enable the attendant to monitor entrant status and to enable the attendant to alert entrants of the need to evacuate the space.
- Must alert the attendant whenever an entrant recognizes any warning signs or symptoms of overexposure or prohibited condition.

Rescue and Emergency

- Rescue and Emergency services will be available by means of trained worker(s), Attendants, or Entry Supervisors able to perform rescue space entry in an appropriate time frame varying with the hazard(s).
- Emergency services will also be available by means of immediate communication with local emergency services and/or the local fire department. The Kansas City Fire Department, Johnson County Fire Department, and Lee's Summit Fire Department are trained and available to perform Trench emergency rescue and Confined Space emergency rescue.
- At least one member of the rescue team (i.e. the Attendant, Entry Supervisor) will hold a current certification in first aid and cardiopulmonary resuscitation (CPR).
- When outside resources are used to provide rescue services, the individuals who will respond must be given copies of the entry permit and attached entry/rescue procedures.

Individuals who have had training that is commensurate with the rescue techniques and equipment that must be used shall only perform emergency rescue. The rescue team for a permit-required confined space entry may consist of HES employees, client rescue teams, outside emergency rescue teams, or a combination of these resources.

All tanks will require entry with special precautions (OSHA permit-required confined space) until the results of tank atmospheric tests demonstrate otherwise. If tank entry is required in order to verify atmospheric tests conducted from the exterior of the tank, then the appropriate level of respiratory and

Confined Space Entry Program	
Document No.: 8.1	Revision: 0

protective equipment must be worn to protect the tester from any potential hazards within the tank.

Once entrance covers are removed the opening will be guarded by railing, temporary cover, or other barrier to prevent an accidental fall through the opening as well as any object from falling through the opening. A mechanical device will be available to retrieve personnel, by lifeline, from vertical type permit spaces more than 5 feet deep. Before a worker enters the space, the internal atmosphere shall be tested, with a calibrated direct-reading instrument, for oxygen content, for flammable gases and vapor, and for potential toxic air contaminants, in that order. There may be no hazardous atmosphere within the space whenever any worker is inside the space unless proper safety controls are in place. A *hazardous atmosphere* may be due to, but not limited to, one or more of the following: **Flammable gas, vapor, or mist in excess of 10% of its lower explosive limit (LEL); Airborne combustible dust at a concentration that meets or exceeds its (LEL); Atmospheric oxygen concentrations below 19.5 % or above 23.5 %; and Carbon Monoxide levels at or above 35 ppm.**

Continuous forced air ventilation will be used to eliminate any hazardous atmospheres prior to any workers entering the space. The ventilation will continue until all workers have left the space. The air supply for the forced air will be from a clean source. The atmosphere within the space will be periodically tested as necessary to ensure that the continuous forced air ventilation is preventing the accumulation of a hazardous atmosphere. Recorded test data will be available if a worker requests to see the collected data.

If any hazardous atmosphere is detected during work activities, workers will evacuate the area until concentrations are below the respective levels. In the event of an emergency situation all personnel will evacuate the confined space area or be assisted by mechanical means. Open communications will be maintained at all times by a designated person to both internal and external emergency service groups. If at any time there is any questionable action or non-movement by the worker inside, a verbal or visual check will be made.

If there is no response, the worker will be removed immediately. *Exception;* If the worker is disabled due to falling or impact, he/ she will not be removed from the confined space unless there is immediate danger to his/ her life. Local fire department rescue personnel or trained HES personnel will be notified immediately. Trained personnel may only enter the confined space in case of an emergency with a self-contained breathing apparatus. The space will be evaluated to determine how the hazardous atmosphere or emergency situation developed and is corrected by proper control measures or through the use of PPE prior to re-entry. HES will document that all identified hazards in the permit space were eliminated, through a certification (Pre-entry checklist) that contains the date, the space location, and the signature of the authorized representative making the determination.

Confined Space Entry Program	
Document No.: 8.1	Revision: 0

Once the work in the confined space has been completed, the authorized personnel responsible for signing the permit will ensure that all workers have exited the confined space and effected areas are safe to remove or close the entry permit accordingly. Permits shall be closed out upon completion and promptly submitted to the Health & Safety Manager, where they will be retained for a period of at least 1 year.

The following equipment will be supplied, maintained, and properly used during space activities:

- Testing and Monitoring Equipment (i.e. Industrial Scientific MG140 direct read inst.)
- Ventilation Equipment
- Communication Equipment
- Personal Protective Equipment (i.e. protective clothing, fall protection, work gloves, etc.)
- Lighting Equipment
- Barriers and shields
- Ingress and Egress Equipment
- Rescue/Emergency Equipment - Backup SCBA Resp. for emergency use by trained personnel

16.0 NON-PERMIT CONFINED SPACES:

Confined spaces may be entered without the need for a written permit or attendant provided that the space can be maintained in a safe condition for entry. All spaces will be considered permit-required confined spaces until the pre-entry procedures prove no hazards exist (i.e. lockout/tagout, monitoring for explosive levels, oxygen content, and toxic levels in the atmospheres).

NOTE: Pre-entry procedures may be conducted without entry into a confined space. Any employee required or permitted to pre-check before entry into an enclosed/confined space will have successfully completed the appropriate training for the job activities performed.

Asbestos personnel conducting inspections or abatement activities may encounter confined spaces. Those personnel will be trained to a level of confined space awareness, at a minimum. Some examples of encountered confined spaces may include: crawl spaces, attics, pipe tunnels, or other undisturbed areas.

17.0 PROGRAM EVALUATION AND WORK SITE INSPECTIONS

To ensure the adequacy of this program and associated procedures, the project managers and the Company health and safety manager may conduct periodic work site inspections on the following:

Confined Space Entry Program	
Document No.: 8.1	Revision: 0

- Are permits being properly completed prior to entry?
- Is the HASP information being attached to permits?
- Is training being performed and documented prior to entry?
- Are hazards being properly monitored and controlled?
- Is the team adequately supplied with equipment?
- Is the team complying with the provisions of the permit?
- Are permits being filed with the Health & Safety Manager?

The frequency of these evaluations will depend on frequency of space entries, the occurrence of incidents and accidents associated with confined spaces, the results of any previous evaluations, and the content on any complaints from employees.

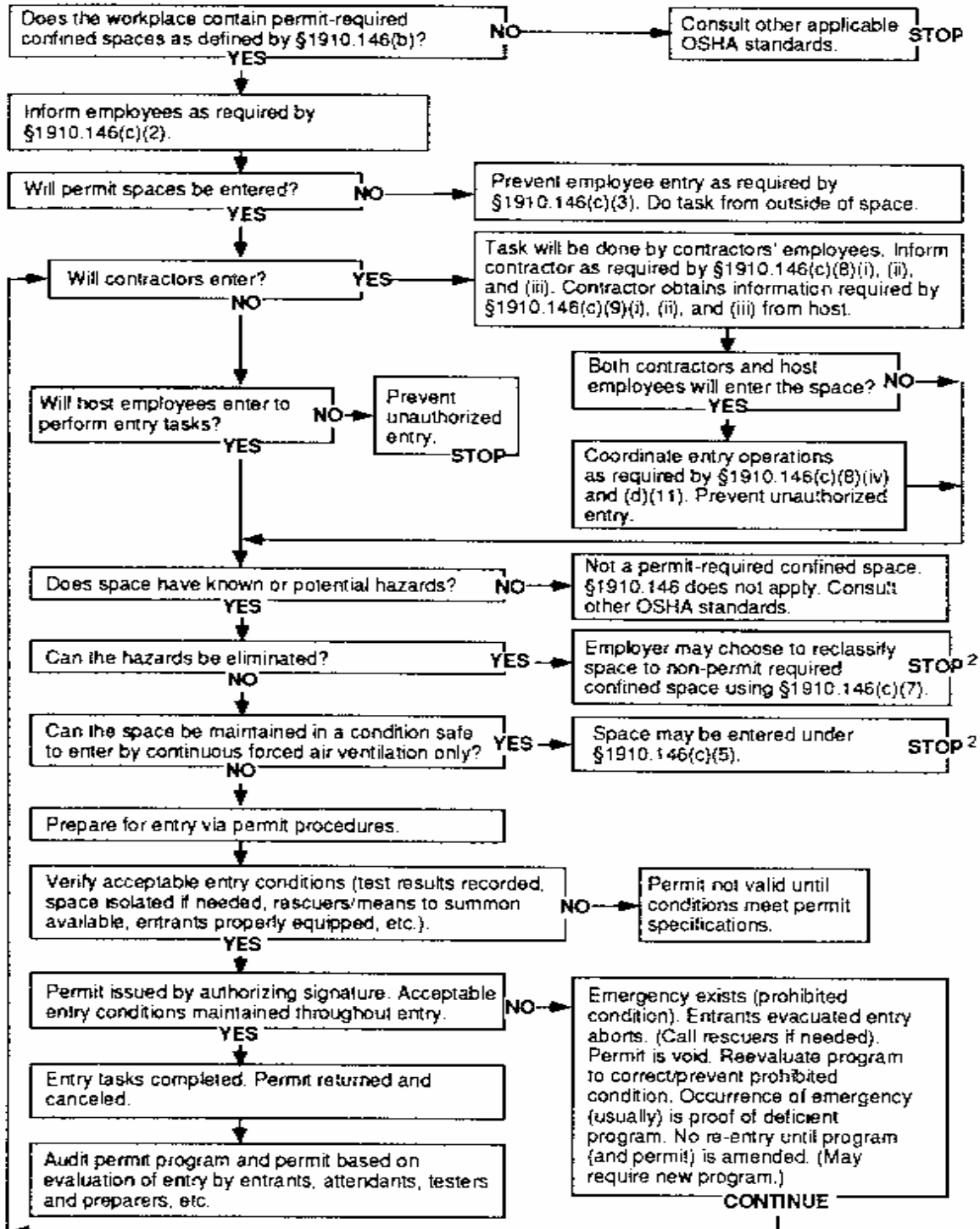
Confined Space Entry Program

Document No.: 8.1

Decision Flow Chart

Revision: 0

Permit-Required Confined Space Decision Flow Chart



¹Title 29 Code of Federal Regulations 1910.146, Appendix A.

²Spaces may have to be evacuated and re-evaluated if hazards arise during entry.

Confined Space Entry Program		
Document No.: 8.1	Pre-Entry Checklist	Revision: 0

CONFINED SPACE PRE-ENTRY CHECKLIST ✓

SPACE LOCATION _____ DATE _____
 PERMIT NO. _____ TIME _____
 ENTRY SUPERVISOR _____ PHONE _____

Mark the appropriate column: <input checked="" type="checkbox"/> Yes, <input checked="" type="checkbox"/> No, or <input checked="" type="checkbox"/> N/A Not Applicable.	Yes	No	N/A
1. Is a "DANGER CONFINED SPACE" sign posted to identify the site as requiring a confined space entry permit to occupy the area?			
2. Has the permit confined space area been isolated?			
3. Is a written permit space program developed and implemented that complies with Section 1910.146(c)(4)?			
4. Have all ENTRANTS been provided training and acquired the understanding, knowledge, and skills necessary for the safe performance of the duties assigned in Section 1910.146(h)?			
5. Have all ATTENDANTS been provided training and acquired the understanding, knowledge, and skills necessary for the safe performance of the duties assigned in Section 1910.146(i)?			
6. Have all ENTRY SUPERVISORS been provided training and acquired the understanding, knowledge, and skills necessary for the safe performance of the duties assigned in Section 1910.146(j)?			
7. Have RESCUE & EMERGENCY SERVICES been provided training and organized for the immediate response to a rescue event in a timely manner in accordance with Section 1910.146(k)?			
8. Is the only hazard an actual or potential hazardous atmosphere?			
9. Will continuous forced air ventilation alone be sufficient to maintain the permit space safe for space entry?			
10. Has continuous monitoring and inspection data been gathered to determine if the hazardous atmosphere (if there is one) can be eliminated by forced air ventilation?			
11. Is continuous monitoring going to be performed to verify that conditions remain acceptable throughout the duration of an authorized confined space entry?			
12. Are employees trained on how to maintain and properly use testing and monitoring equipment?			
13. Is communication equipment available for use between attendant(s) and entrant(s)?			
14. Are the entrants provided with PPE to be adequately protected?			
15. Have steps been taken for purging, inerting, flushing, blanking, blinding, double blocking, bleeding, or ventilating the permit confined space to eliminate or control hazardous atmospheres?			
16. Has adequate lighting equipment been supplied to allow a safe work area?			
17. Has the area been secured with barriers and shields from pedestrian, vehicle, or other barriers to protect the entrants from external hazards?			

NOTES:

Confined Space Entry Program		
Document No.: 8.1	Entry Permit	Revision: 0

HES Construction

FORM # CSEP-001C

CONFINED SPACE ENTRY PERMIT

KES PERMIT NO.: _____ **JOB NO.:** _____

NOTES: Atmosphere must be retested before re-entering if the confined space is vacated for any reason.

When HOT WORK is performed the Confined Space will be considered Entry With Restrictions.

Permit Space To Be Entered: _____ Duration of Entry: From _____ To _____

Location: _____ Purpose Of Entry: _____

Date Of Entry: _____ Original Authorized Entry Supervisor: _____

I. Permit Space Hazards: (check applicable section)	YES	NO	N/A
Oxygen Deficiency (Less than 19.5%)			
Oxygen Enriched (Greater than 23.5%)			
Combustible gases or vapors (greater than 10% of LFL or LEL)			
Airborne Combustible dust (meets or exceeds LFL or LEL)			
Toxic gases or vapors (greater than PEL) Contaminant: _____			
Mechanical Hazards / Expoaure Type: _____			
Electrical Hazards / Shock Type: _____			
Temperature (Heat/Cold Stress)			
Engulfment Description: _____			
Entrapment Description: _____			
Chemical Contacts (Dermal) Chemical: _____			
Others: _____			

II. Measures/Controls used to isolate permit space and related hazards before entry	YES	NO	N/A
Purge-Flush and/or Vent			
Lockout / Tagout			
Blanking, Blocking, Bleeding			
Confined Space Signs			
Continuous Ventilation			
Inerting Inert gas: _____			
External Barricades			

Acceptable Entry Conditions: _____

Communication procedures used by Authorized Entrants and Attendants during entry activities: _____

Time									
Oxygen (19.5% - 23.5%)									
Flammability (<10% LFL)									
H ₂ S (< 10 ppm)									
CO (< 35 ppm)									
Temperature (°F/°C)									
Toxic Specify: _____									
Other: _____									
Testers Initials									

Required Monitoring Make: _____ Make: _____ Make: _____

Equipment Used: Model: _____ Model: _____ Model: _____

Serial #: _____ Serial #: _____ Serial #: _____

Calibration Due: _____ Calibration Due: _____ Calibration Due: _____

Emergency Service(s) Available: _____ **Phone No:** _____

Entry Supervisor(s) 1. _____ 2. _____ 3. _____

Times: _____ Times: _____ Times: _____

Authorized Attendant(s) 1. _____ 2. _____ 3. _____

Times: _____ Times: _____ Times: _____

Authorized Entrant(s) 1. _____ 2. _____ 3. _____

Times: _____ Times: _____ Times: _____

Special Restrictions (Precautions) Required for Entry: _____

Rescue Plan with Equipment Required: _____

Conditions Acceptable for SAFE Hot Work Activities: _____

THIS CONFINED SPACE PERMIT HAS BEEN CANCELED BY:

Entry Supervisor Signature: _____ Time: _____ Date: _____

DO NOT DESTROY THIS PERMIT AFTER CANCELLATION; IT MUST BE RETAINED FOR ONE YEAR

Confined Space Entry Program		
Document No.: 8.1	Welding/ Cutting Hot Work Permit	Revision: E

HES Construction

FORM# HWP-001A

Welding/Cutting Hot Work Permit

NOTE: Hot Work activities do not begin until the work area has been tested for flammable, explosive, or oxygen enriched atmospheres. Confined Space Entry Permit must be used along with this Hot Work Permit anytime hot work activities are in or on a confined space.

Location: _____ Project No. _____

Description of Hot Work Activities: _____

Date: _____ Start Time: _____ AM / PM

Welding/Cutting Equipment Operator: _____

Type of Welding/Cutting Equipment: _____

Tester: _____

Testing Record*

** If more testing events are collected then record each event with the testing data on the backside of this form.*

Required Monitoring Equipment Used:

Make: _____ Make: _____

Model: _____ Model: _____

Calibration Due: _____ Calibration Due: _____

Charged Emergency Fire Extinguisher Available: YES NO

NOTE: If testing levels are high then ventilation activities must be performed until high levels are lowered to acceptable working conditions set by the testing instrument. High levels should be retested every 10 to 15 minutes after ventilation begins to attain safe working conditions.

Type of Mechanical Ventilation Equipment Used (if applicable):

Emergency Numbers are identified and accessible? YES NO

Stop Time: _____ AM / PM

THIS WELDING/CUTTING HOT WORK PERMIT HAS BEEN CANCELED BY:

Signature: _____

DO NOT DESTROY THIS PERMIT AFTER CANCELLATION; RETURN TO SAFETY DEPT.

